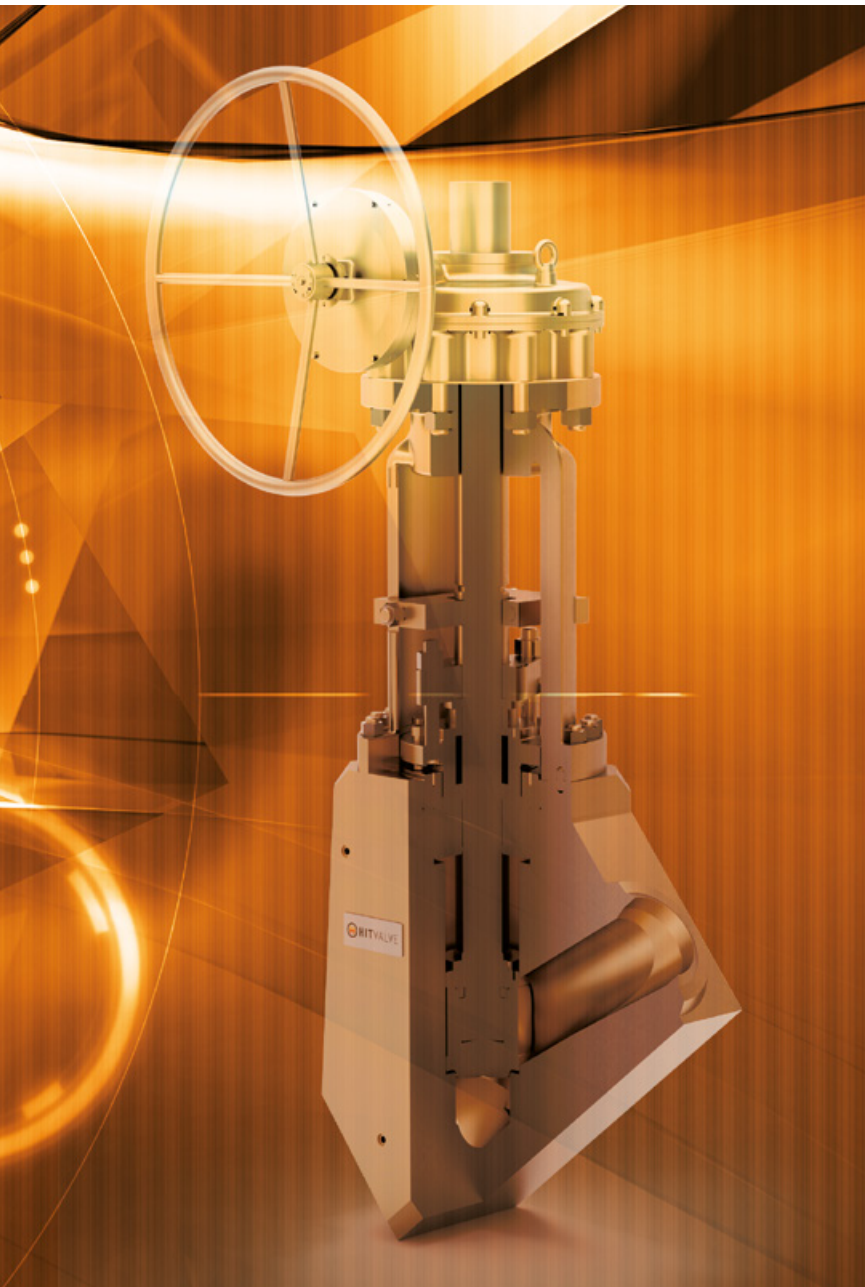


# RISING STEM GLOBE AND PISTON CHECK VALVES



## SERVICE APPLICATIONS:

- Cooling water systems requiring flow regulation
- Fuel oil systems requiring leak-tightness
- Control valve bypass systems
- High-point vents and low-point drains
- Oil and Gas, Feed water, Chemical feed, Refinery, condensed air and drain systems extraction
- Boiler vents and drains, steam services, main stream vents and drains and heater drains
- BDO Unit, hydrogen and BDO shut-off

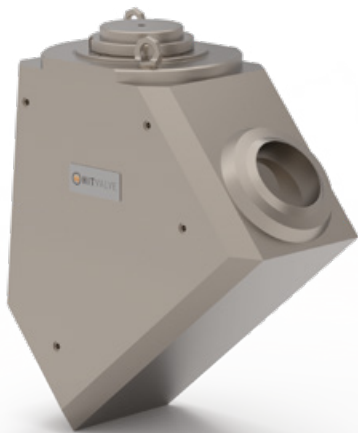
## GLOBE VALVE



### HL GLOBE VALVE T-TYPE Y-TYPE ANGLE TYPE

- Cast or Forged body
- Sizes: from 3/4" to 20"
- Pressure ratings: ASME Class 150 to 4500
- Metal seated
- Welded or bolted bonnet
- Pressure seal gasket design available
- Rising stem
- Flanged, BW, SW, Threaded ends
- Live loading stem packing

## PISTON CHECK VALVE



### HK PISTON CHECK VALVE T-TYPE Y-TYPE ANGLE TYPE

- Cast or Forged body
- Uni-directional
- Sizes: from 3/4" to 20"
- Pressure ratings: ASME Class 150 to 4500
- Metal seated
- Welded or bolted bonnet
- Pressure seal gasket design available
- Flanged, BW, SW, Threaded ends

### HX AXIAL CHECK VALVE

- Cast or Forged body
- Uni-directional
- Sizes: from 3/4" to 20"
- Pressure ratings: ASME Class 150 to 4500
- Metal seated
- Welded or bolted bonnet
- Pressure seal gasket design available
- Flanged, BW, SW, Threaded ends

# GLOBE & CHECK

## TYPICAL SERVICE

- Commonly used as an on/off valve, globe and check valves may be used also for throttling systems.
- Applicable for both gas and liquid systems.

## TECHNICAL SPECIFICATION

VALVE SERVICE	PRODUCT SIZE	WORKING PRESSURE RATINGS
GLOBE VALVES	From 3/4" to 20"	Up to ASME Class 4500
PISTON CHECK VALVES	From 3/4" to 20"	Up to ASME Class 4500

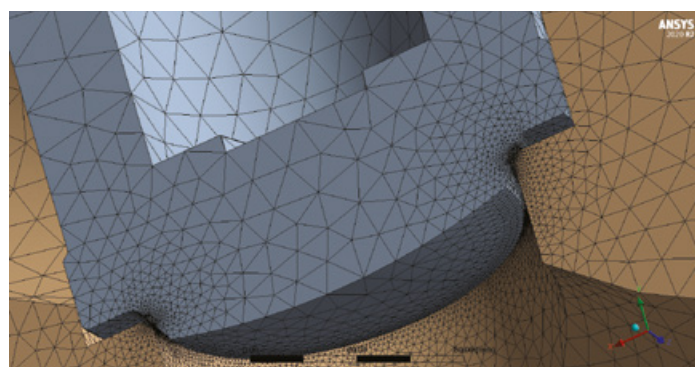
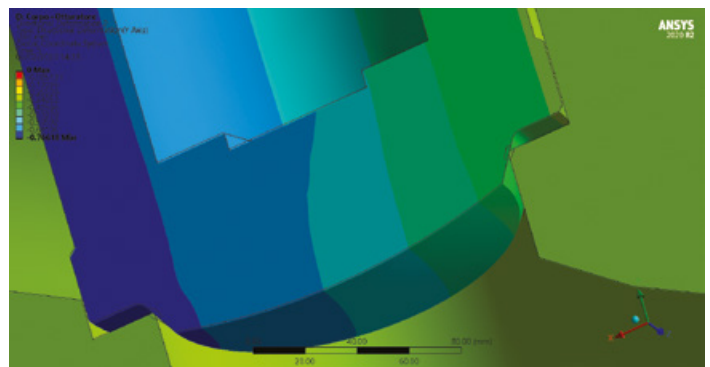
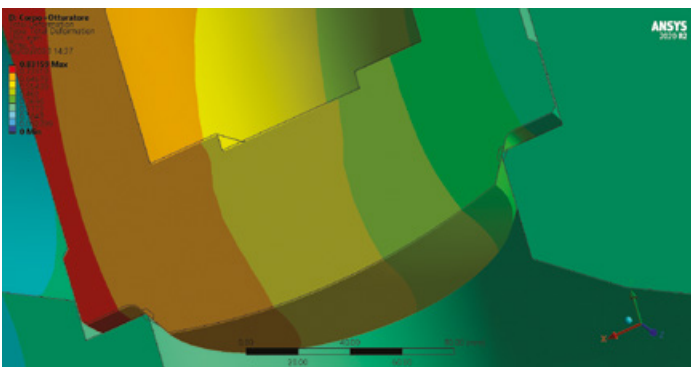
Other sizes, reduced bore sizes and pressure classes are available upon request.

## TEMPERATURE RANGE

VALVE SERVICE	LOW TEMPERATURE	HIGH TEMPERATURE
STANDARD SERVICE	Down to -46 °C	Up to +250 °C
HIGH TEMPERATURE SERVICE	Down to -46 °C	Up to +550 °C

## FINITE ELEMENT ANALYSIS

Traditional design procedure is integrated with Finite Element Analysis into the design cycle of our products in order to support continuous improvements in terms of quality, safety, cost effectiveness and reliability. Structural analyses were performed on the valve components in order to evaluate their strength under high pressure loading and to optimize the design.



# TECHNICAL SPECIFICATIONS

## OPERATION

Manual handwheel, gearbox, actuator [electric, pneumatic, hydraulic]

## MATERIAL SECTION

BODY	OBTURATOR	STEM	BALL AND SEAT COATING	SEALS	BOLTING
<b>CARBON STEEL</b> › A105 › WCB › LCC › LF2 › LF3 › F9 › F11 › F22 › F60/F65 › EN 10028 S355 › A516 Gr.70 <b>STAINLESS STEEL</b> › F304 › CF8M (SS316) › 321 › 347 › 13Cr › 13Cr4Ni › 17-4PH › 6Mo › Nitronic <b>DUPLEX SS</b> <b>SUPERDUPLEX SS</b> <b>NICKEL ALLOYS</b> › Inconel › Monel <b>TITANIUM</b>	<b>CARBON STEEL</b> › A105 › LF2 › LF3 › F60/F65 › EN 10028 S355 › A516 Gr.70 <b>STAINLESS STEEL</b> › F304 › 316 › 321 › 347 › 13Cr › 13Cr4Ni › 17-4PH › 6Mo › Nitronic <b>DUPLEX SS</b> <b>SUPERDUPLEX SS</b> <b>NICKEL ALLOYS</b> › Inconel › Incoloy › Monel <b>TITANIUM</b>	<b>CARBON STEEL</b> › 4140 › LF3 › F60/F65 <b>STAINLESS STEEL</b> › 13Cr › 13Cr4Ni › 17-4PH › 6Mo › Nitronic <b>DUPLEX SS</b> <b>SUPERDUPLEX SS</b> <b>NICKEL ALLOYS</b> › Inconel › Monel <b>TITANIUM</b>	<b>METAL SEATING</b> › STELLITE	› RPTFE › FKM › HNBR › FFKM › Graphite › Stem packing Graphite	<b>CARBON STEEL</b> › B7/2H › L7/7 › B7M/2HM › L7M/7M › L43/7 <b>STAINLESS STEEL</b> › B8/8 › B8M/8M › B16 › 660 <b>SUPERDUPLEX SS</b> <b>NICKEL ALLOYS</b> › Inconel <b>TITANIUM</b>

Materials have to be selected as per specific project design and working condition, such as temperature, pressure, service, media composition, etc. HIT VALVE will support the design engineering also in material selection.

## PRODUCT STANDARDS AND CUSTOMER SPECIFIC TESTS

STANDARD TESTS	OPTIONAL TESTS
<ul style="list-style-type: none"> <li>Hydrostatic Shell</li> <li>Hydrostatic Seat Test</li> <li>Low Pressure Gas Test</li> <li>Functional Test</li> <li>Anti-static Test</li> </ul>	<ul style="list-style-type: none"> <li>Torque Test</li> <li>Endurance Test (cycling)</li> <li>High Pressure Gas Test</li> <li>Fugitive Emission Test</li> <li>High Temperature Test</li> <li>Firesafe Test</li> </ul>

## QUALITY CERTIFICATES

SYSTEM CERTIFICATIONS	PRODUCT LICENSES AND QUALIFICATIONS TO SPECIFIC STANDARDS AND APPLICATION REQUIREMENTS	APPROVALS TO RELEVANT MARKETS
<ul style="list-style-type: none"> <li>ISO 9001</li> <li>ISO 14001</li> <li>ISO 45001</li> </ul>	<ul style="list-style-type: none"> <li>API 6D</li> </ul>	<ul style="list-style-type: none"> <li>Achilles JQS</li> <li>FPAL</li> </ul>

# CONTACT AND INFORMATION

---

For any further request, please contact our Departments:

- **SALES DEPARTMENT:** sales@hitvalve.com
- **ENGINEERING DEPARTMENT:** eng@hitvalve.com
- **PROCUREMENT DEPARTMENT:** procurement@hitvalve.com
- **WORLDWIDE SERVICE SUPPORT:** sales@hitvalve.com
- **GENERAL REQUEST:** info@hitvalve.com

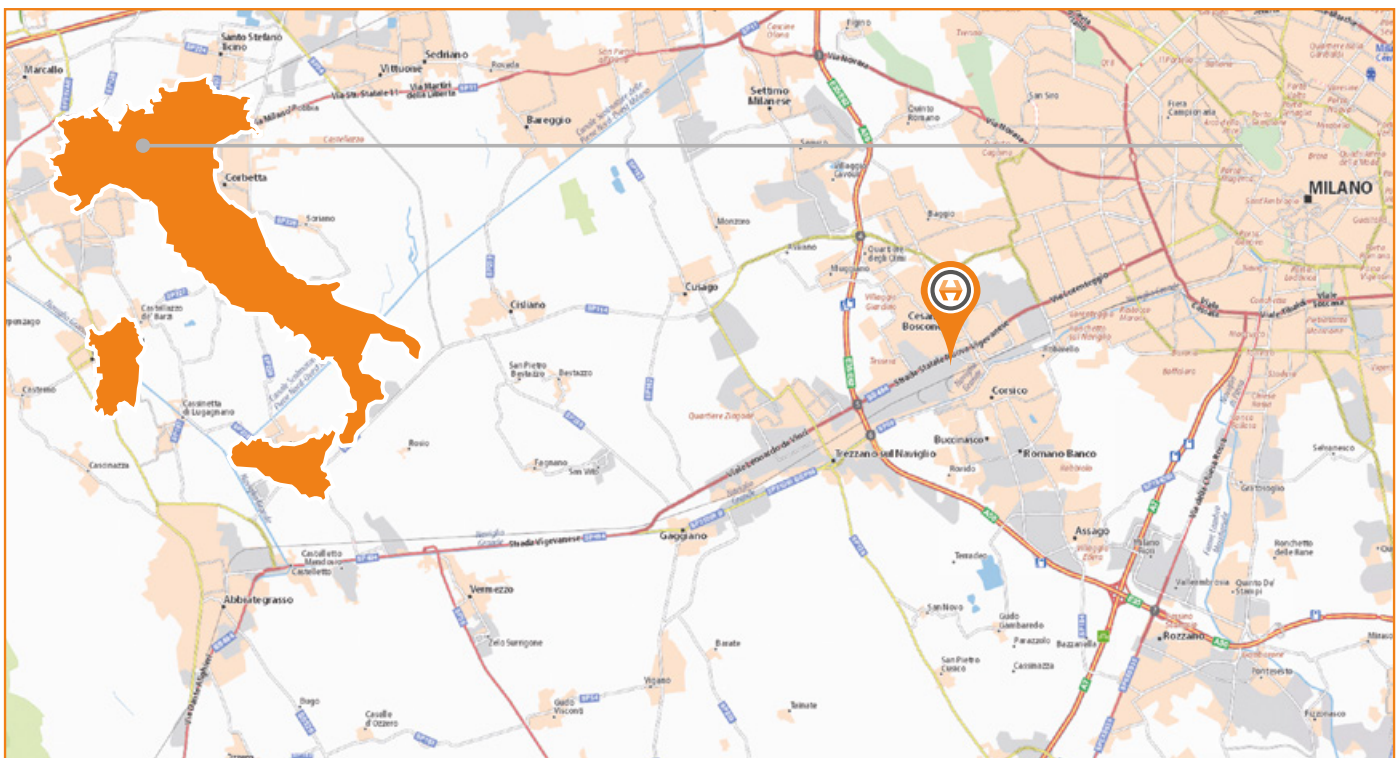
For more detailed information about the Company, please visit our website [www.hitvalve.com](http://www.hitvalve.com) and free download proper supporting documents:

- **CERTIFICATES**  
under the section **QUALITY**
- **CATALOGUES FOR EACH PRODUCT CATEGORY**  
under the section **DOWNLOAD AREA**
- **CUSTOMER APPROVALS**  
under the section **DOWNLOAD AREA**
- **VALVE SIZING CALCULATOR GUIDE FOR CONTROL BALL VALVES**  
under the section **VALVE SIZING CALCULATOR**

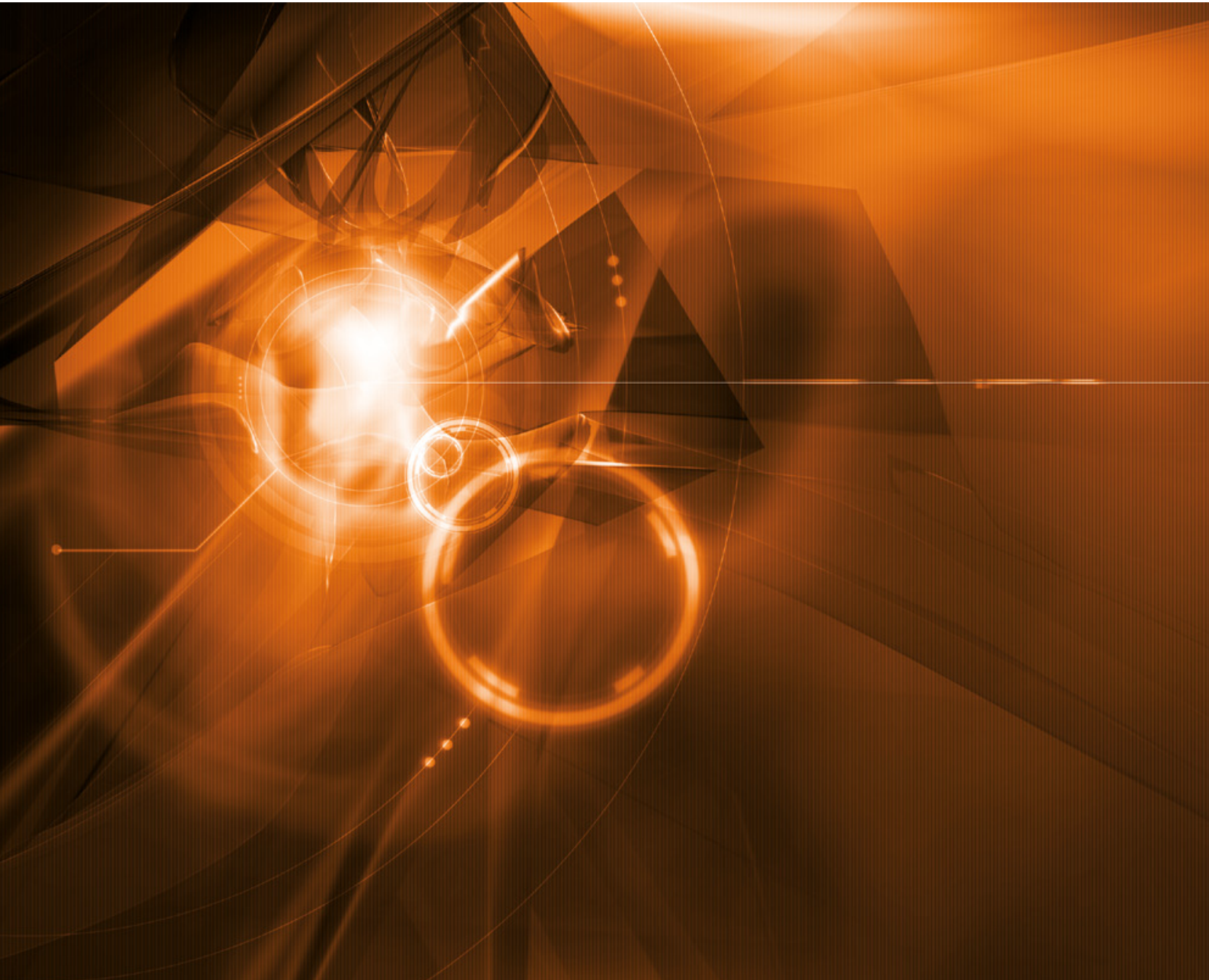
## CONTACT DETAILS - ITALY

Via Privata Tacito, 8/10  
20094 Corsico (MI), Italy  
Tel: +39 02 4457681

Fax: +39 02 4456900  
info@hitvalve.com  
[www.hitvalve.com](http://www.hitvalve.com)



[WWW.HITVALVE.COM](http://WWW.HITVALVE.COM)



**HIT VALVE S.p.A.**  
Via Privata Tacito, 8/10  
20094 Corsico (MI), Italy

Tel: +39 02 4457681  
Fax: +39 02 4456900  
[info@hitvalve.com](mailto:info@hitvalve.com)  
[www.hitvalve.com](http://www.hitvalve.com)

Doc. No. HIT-CAT- GLOBE & CHECK – March 2024

All data in this catalogue is provided specifically for information only. Due to the continuous development of our products, we reserve the right to update, add, change, delete and/or alter the content, in part or in whole, at our discretion. Uncontrolled when printed. Property of HIT VALVE S.p.A. Published by HIT VALVE S.p.A. Copyright© 2024.